

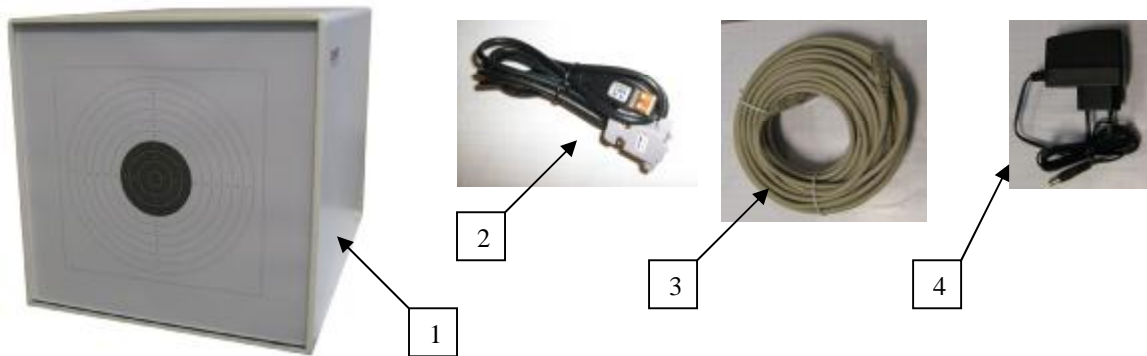
# TARGET LPT

## INSTRUCTION MANUAL

### 1. Safety Precautions

- Read this Instruction Manual carefully before first use.
- Use the device only as described in this Instruction Manual.
- Never aim at people, animals or to an uncontrolled area.
- Observe general rules for weapon handling while operating the weapon.
- ATarget: is an optoelectronic device; disassembly of the individual parts is forbidden.
- Never use a damaged power supply to power the detector.
- Secure the data cable and power supply cable so that people moving near the device cannot get caught.
- Use the device only for the intended purpose.
- Never use a damaged extender or data cable.
- Never use data connectors for connection to a network or to connect other devices.

### 2. Description



1. target device  
2. extender

3. data cable  
4. power supply

The delivery includes ATarget device, power supply, extender, 15m data cable and a media with shooting software.

### 3. Purpose

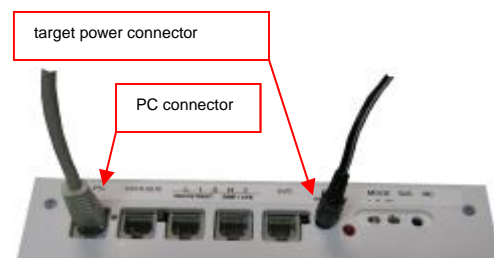
The target is intended for sensing hits of optical shots from laser weapons when arranging training or shooting contests. The target evaluates and using the supplied software displays position of a shot. It features simple operation and high safety.

### 4. Software Installation

System requirements:

PC with WIN XP OS or higher.

Insert the installation media to your PC. If your PC does not have .NET framework installed, double click Computer icon, then the media icon, NETframework35Full icon and run the installer.



### 4. Preparation of the Target for Operation

- 1) turn on your PC,
- 2) place the target device to the desired location,
- 3) insert power supply connection to the target's power connector,
- 4) insert the power supply to a 230VAC wall socket; the power indicator starts flashing,

APEOM s.r.o.

- 5) insert one end of the data cable to a connector marked PC on the target device,
- 6) insert the other end of the data cable to the extender connector,
- 7) **DO NOT USE** other connectors; **DO NOT CONNECT** to a computer network.
- 8) Insert the USB connector of the extender to a free USB socket of your PC; wait for the device to be recognized,
- 9) Start Atarget by double-clicking the icon
- 10) or select All Programs in Start menu and then Atarget, Atarget program.

### Program settings

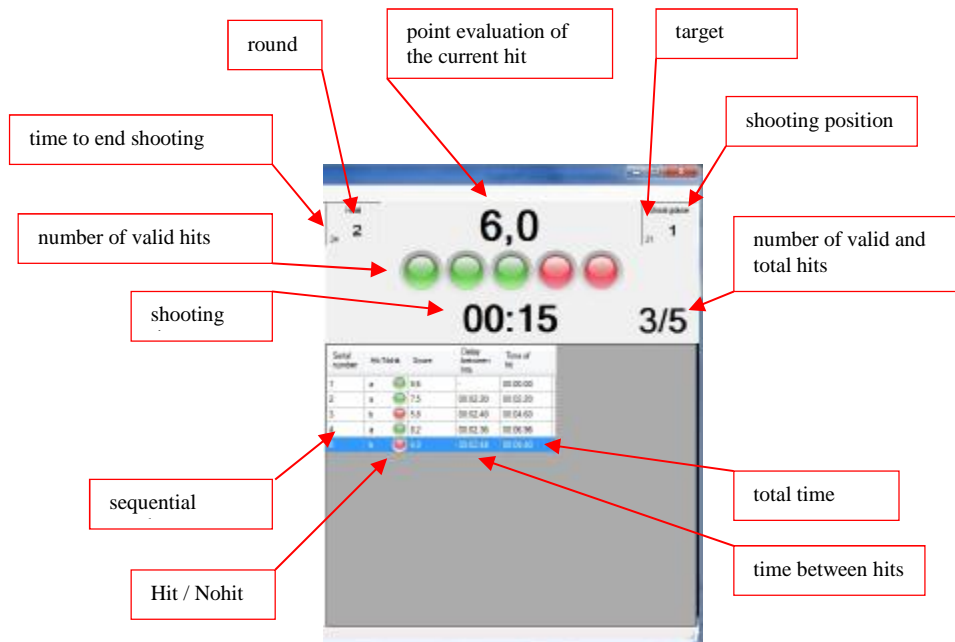
After the program is started, an initial window with target, divided into several fields, opens.

1. Menu panel
2. Target field
3. Shooting evaluation field



Positions of hits are displayed in the target field. The last hit is displayed in red.

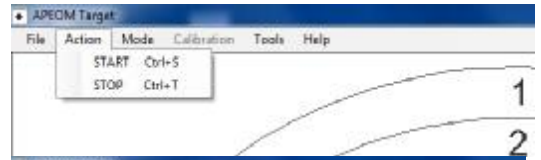
The evaluation field displays the following data:



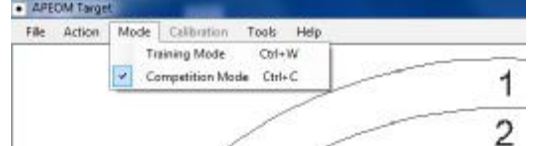
In the **File** menu you can choose an option to display results, for printing the current result or to exit the program.



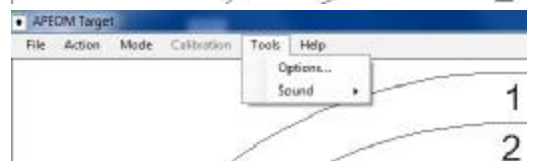
In the **Action** menu you can start or stop the program. Resetting the results is performed automatically and with the first hit.



In the **Mode** menu you can choose shooting mode. There are two modes in the menu, namely *Training* and *Competition*.



In the **Tools** menu you can choose settings of some parameters. Using the *Sound* command you can turn off or on sound playback.



Click the *Options* command to open a window with tabs. It is recommended to avoid making changes of settings on these tabs. It is recommended to avoid changing settings on the General tab. Do not change any setting on the Target tab.

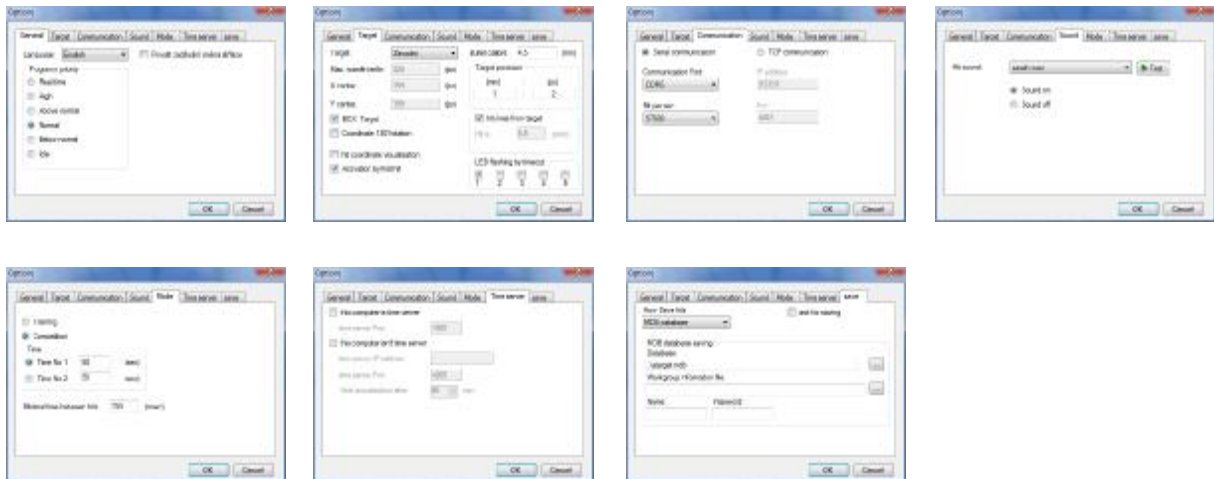
You can make a change on the Communication tab to choose a communication port in case that the program cannot find the communication port by itself. Do not change the value under „Bits per second“.

You can assign sounds for hit, target activation or deactivation on the Sound tab. The sound file must have .wav extension.

On the Mode tab you can assign parameters to the individual shooting modes. It is recommended not to change the value of „Minimum time between hits“.

It is recommended to avoid changing settings parameters on the Time Server tab.

It is recommended to avoid changing settings parameters on the Saving tab.



## Description

Hits are displayed in the target field. The last hit is displayed in red colour.

Shooting parameters are displayed in the shooting evaluation field. The first column „Sequential Number“ displays sequential number of hits. The column „Hit / Nohit“ displays whether a hit was valid or not. A valid hit is displayed in green. The „Score“ column shows point value of a hit. The column „Time between hits“ displays time it took for the next hit. The column „Total Time“ displays time of hit since the beginning of shooting.

It is possible to browse through the individual hits. By clicking a line in „Shooting evaluation field“ you can scroll up or down through the individual hits using arrows. The active line is coloured in blue and the respective hit is displayed in red.

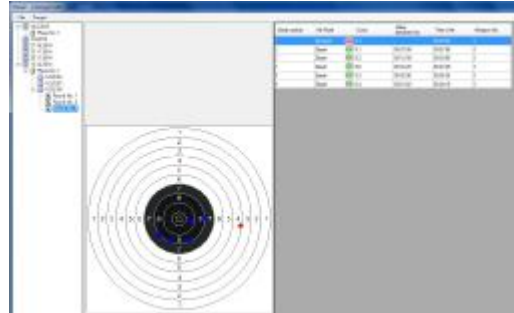


APEOM s.r.o.



Always check whether the MODE switch is in the right position and the SVC switch is in the left position to ensure correct operation of the target.

Click File and then Results viewer to check the shooting results. Choose shooting result by date and time of the shooting. It is structured by the individual rounds. It is possible to browse through the individual hits. By clicking a line in „Shooting evaluation field“ you can scroll up or down through the individual hits using arrows. The active line is coloured in blue and the respective hit is displayed in red.



## 5. Rules of Operation

Never aim at persons, animals or to an uncontrolled area – it is necessary to observe general rules for weapon handling while using the equipment just as if a live weapon was used.

Place the target in such a way to prevent reflection of the optical ray from the basis (a table, etc.) onto the target or incidence or reflection of undesirable light to the target. At the same time, the placement must be such that the target is evenly lit and without shadows.

If the target is too brightly lit or on the contrary located in a dark area, it may emit beep sound. In such case, correct operation of the target is not ensured. It is necessary to provide proper lighting conditions for correct operation of the target through change of its location or change of the ambient light.

Never use the target if it is damaged. Never use the power supply if its cover, insulation, plug, power connector or cable is damaged.

Use the connector marked PC for connection to a PC. **Do not use** other connectors; **do not connect** to a computer network.

If you have a display for showing hits, check for its type. Connect the NaviStret display to the connector marked LIGHT NAVISTREET, Connect the SimPower or APEOM displays to the connector marked LIGHT SIMP/APE. You must not confuse the connection.

## 6. Maintenance

Keep the device clean by wiping dust using a dry cloth. Do not use any cleaning agents, solvents and chemicals or alcohol-based cleaners.

Do not use the power supply if its cover, plug, connector or connector's conductor are damaged.

## 7. Potential Defects and Troubleshooting

The program does not evaluate hits

Exit the program and restart it or  
check if the power indicator is lit or  
check connection of the data cable to the PC or  
check if the STOP command in Action menu is not checked or check  
if the weapon emits an optical ray after pressing the trigger

In case of other faults

Contact the supplier

## 8. Specifications

<i>Parameter name</i>	<i>Value</i>
· recommended distance of shooting	10 m
· power	12V DC
· dimensions	20 x 20 x 22 cm
· weight	1,6 kg
· operating temperature	+5°C to +42°C
· laser signal type	UIPM laser signal 15.6 ms
· update function	via RJ connector
· data output format	UIPM Open target protocol
· protection class of housing	IP52

## 9. Special Provisions

The target is equipped with a serial number plate and sealing stickers. Warranty is void in case of damage to the stickers.

APEOM s.r.o.